

# FUTURE STANDARD HQ VISITOR INFORMATION

# PARKING AT FUTURE STANDARD HQ

3025 JFK Blvd, Philadelphia, PA 19104

## LOCAL PARKING APPS:

- [Spot Hero](#)
- [ParkWhiz](#)
- These apps can be used to seamlessly locate, reserve, and pre-pay for parking near our headquarters at 3025 JFK Blvd.

## STREET PARKING APP:

- [MeterUp](#)
- JFK Blvd hosts metered street in 2-hour increments. If street parking is available, MeterUp allows you to manage your parking session and extend if needed.

## LOCAL LOTS + GARAGES:



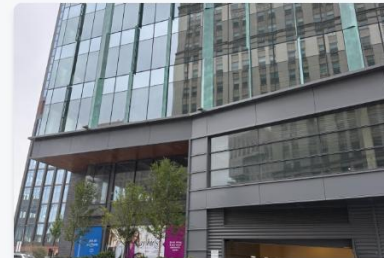
3025 JFK Blvd. - Schuylkill Yards West Tower Garage  
★★★★★ (130)  
🚶 <1 min (69 ft)



3051 John F Kennedy Blvd. - Lot  
★★★★★ (23)  
🚶 <1 min (177 ft)



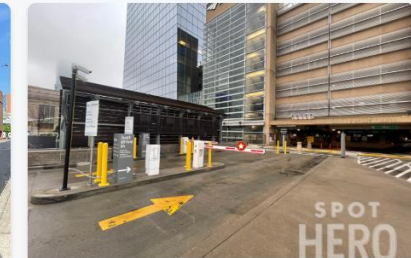
3003 JFK Blvd. - Lot  
★★★★★ (1,174)  
🚶 2 min (0.1 mi)



3162 John F Kennedy Blvd. (3151 Market St.) - Garage  
★★★★★ (67)  
🚶 3 min (0.2 mi)



3387 Ludlow St. (3330 Market St.) - Drexel Garage  
★★★★★ (20)  
🚶 7 min (0.3 mi)



2929 Arch St. - Amtrak Garage  
★★★★★ (548)  
🚶 7 min (0.3 mi)

# VISITOR ENTRY AT FUTURE STANDARD HQ

3025 JFK Blvd, Philadelphia, PA 19104

## VISITOR ENTRY:

- Visitors will enter through the lobby doors facing 30<sup>th</sup> Street Station next to the dog park
- Visitors will be required to check in with Brandywine Realty Trust security in the lobby with a valid ID
- Security turnstile access + elevator selection will be completed by security and visitors will arrive on Level 5 at Future Standard Reception
- Future Standard Reception will greet all visitors + alert hosts to their arrival

